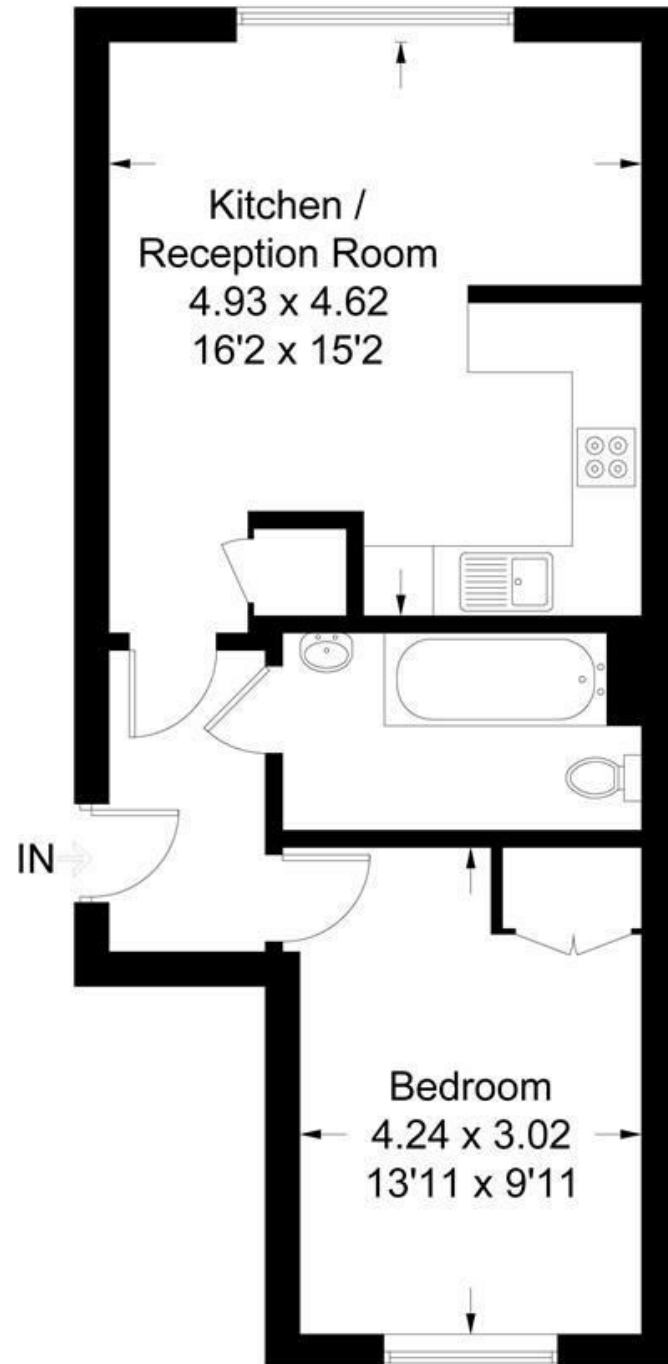


Northfield Avenue, W13

Approximate Gross Internal Area = 47.8 sq m / 515 sq ft



Second Floor

Measured in accordance with RICS Code of Measuring Practice. To be used for identification and guidance purposes only.
Whilst every care is taken in the preparation of this plan, please check all dimensions, shapes and compass bearings before making any decisions reliant upon them.
www.london58.com © 2021 hello@london58.com



APARTMENT

Northfield Avenue W13
£1,500 PCM

FEATURES

- Juliet Balcony
- Close to West Ealing Crossrail Station
- Lift Access
- Communal Garden

APARTMENT

Northfield Avenue W13

£1,500 PCM

This one bedroom apartment is set within a well maintained modern block, ideally positioned in an enviable location between Ealing Broadway and West Ealing. The property is close to plenty of public transport options with Ealing Broadway (Central and District line) in close proximity and West Ealing (Heathrow Express and soon to be Crossrail station) just moments away.

